



XE155UCR

LARGE EXCAVATOR



www.xcmgmachinery.com.au

INDUSTRY EXPERTISE

XCMG Sales & Service is one of Australia's **fastest growing** construction and mining equipment suppliers.

Offering premium quality excavators, wheel loaders, compaction rollers, graders, access equipment and mini excavators, XCMG Sales & Service has **the products and the support** to keep you working on any job site.

MACHINERY SALES

XCMG Sales & Service know construction and mining equipment. You can count on our **dedicated and knowledgeable team** of product experts to take the time to understand and satisfy your machinery needs by recommending the **right solution for the job**.

RENTALS & HIRE

If you need a high-performance machine with reliability you can **trust**, and the flexibility of hiring, we have you covered.

Our fleet is diverse, with machines to suit almost any job. Furthermore, because our rental fleet is maintained by factory-trained technicians, you can be confident that you'll not only be getting the best machines on the market, but that it's going to **work as hard as you do**, day-in day-out.

AFTERMARKET SUPPORT

We're here to help keep you and your machine working. With an **exceptional over-the-counter fill rate** on spare parts, you're assured that when you buy a machine from XCMG Sales & Service, you'll be looked after throughout your machine's entire lifetime, from start to finish.

Every service job is as important to us as it is to you, and with a dedicated team of machinery technicians, we have ample resources to look after any of your machine repairs or servicing requirements **quickly and efficiently**.

ABOUT

The World's 3rd largest manufacturer of construction and mining equipment.

Founded in 1943, 8 decades of experience.

Manufacturing in USA, Germany, China, Brazil and India.

Extensive supply chain and dealer network throughout Australia.

Deep relationships with corporate giants: Rio Tinto, BHP and MMG in Australia.

MINI / LARGE EXCAVATORS

1 to 49 Tonne

WHEEL LOADERS

5 to 100 Tonne

COMPACTION ROLLERS

1.5 to 30 Tonne Smooth & Padfoot

GRADERS

7.5 to 70 Tonne

ACCESS EQUIPMENT

Lift Heights from 5 to 21 Metres



NEWCASTLE (NORTHERN NSW)

Situated in Hexham on the Pacific Highway. Serves the Northern NSW region from the Hawkesbury River to the QLD border. Company headquarters: complete sales, service (in-house / field), hire, parts and corporate shared services.

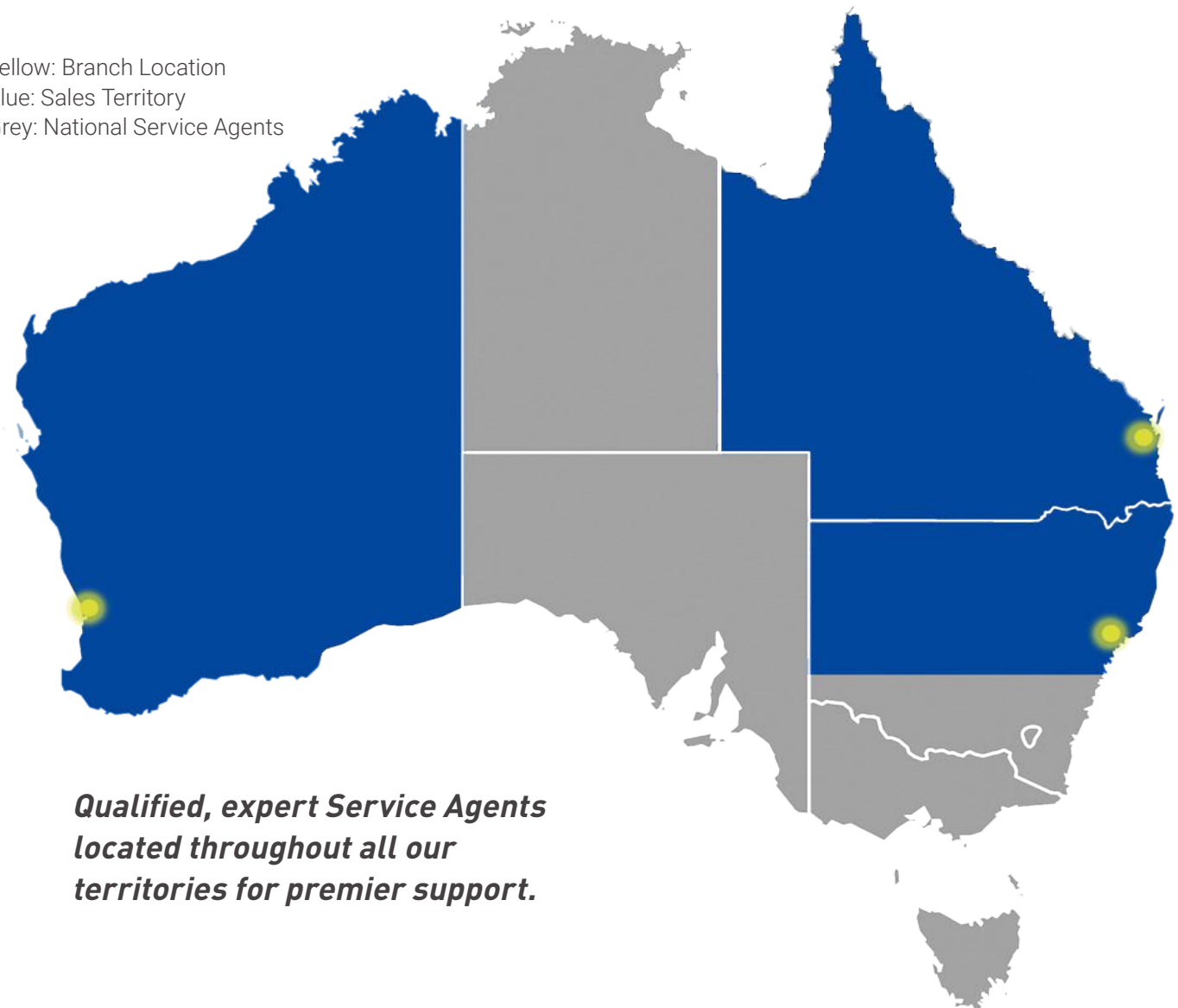
PERTH (WESTERN AUSTRALIA)

Located in Welshpool just 15 minutes from the CBD, serves the entire state of Western Australia. Sales, rentals, parts and service, including field service capabilities to various mine sites throughout WA.

BRISBANE (QUEENSLAND)

Situated 30 minutes from the CBD, conveniently located to serve all areas of Queensland. Sales, rentals, parts and service (in-house and field).

Yellow: Branch Location
Blue: Sales Territory
Grey: National Service Agents



***Qualified, expert Service Agents
located throughout all our
territories for premier support.***

PERFORMANCE, RELIABILITY & VALUE

GLOBAL DOMINANCE

XCMG is the World's 3rd largest construction machinery manufacturer, with branches, dealers and service agents throughout Australia.

EASY SERVICE ACCESS

All daily maintenance points are easily reached and serviced from the ground, ensuring simple day-to-day checks for the operator.

CUMMINS ENGINE

Renowned Cummins engine with either a tier 3 model QSF 3.8 or B4.5, 4 cylinder, stage 5 emission standard engine - equipped with diesel particulate filter delivering maximum power and torque.

EXCEPTIONAL HYDRAULICS

Class-leading Kawasaki 2x113.4 LPM hydraulic system delivers exceptional flow rates to attachments using a two tandem axial piston pumps.

SAFETY VALVES

The XE155UCR has included as standard, safety valves on the arm and the boom, increasing operator and bystander safety.

INTELLIGENT DESIGN

The innovative and practical design includes a Spacious ROPS and OPG climate-controlled cab and ergonomic setup with air suspension seat, delivering unmatched comfort and control.



XE155UCR LARGE EXCAVATOR

EFFICIENT RETURN

Large displacement main pump provides fast response, low speed, high torque, and low energy consumption - this creates reduced pressure loss and improved operating conditions.

RELIABILITY & TRUST

XCMG's key focus is the complete satisfaction and success of every machine owner - making your business as profitable as possible.

UNMATCHED SUPPORT

Your local dealer provides exceptional support throughout your machine's life: operation, maintenance and service from delivery to its very last day on the job.

OPERATOR COMFORT

Air conditioning with cooling and heating temperature control, a multi-channel stereo sound system, ample storage, and colour LCD display ensures operator comfort all day long.

LESS ENGINE SERVICE

500 hours until engine diesel filter replacement, engine oil replacement and filter replacement - plus long service intervals guaranteed for less down-time.

REDUCED TAIL-SWING

The ultra-short tail swing, and short front turning radius, make it easier to work in small spaces. In tight areas it's a great advantage when you only need 4m to turn around.



PERFORMANCE, RELIABILITY & VALUE

ECONOMICAL DESIGN

The Cummins engine offers fuel efficiency and Kawasaki hydraulic pump reduces pressure loss by using smart match technology, working together to ensure maximum efficiency.

MULTIPLE APPLICATIONS

Multi-function intelligent work tool control system can meet different operating requirements such as crushing, demolition, compacting, milling, hoisting and much more.

REINFORCED CHASSIS

Upgraded X shaped undercarriage structure system improves load bearing performance, plus strengthened key stress-bearing parts of chain links improve the lifespan of the XE155UCR.

IN-CABIN COMFORT

Silicone rubber shock absorbers are used to reduce vibration, fully adjustable seat and in cabin sensors to automatically adjust temperature in the cab to provide extra operator comfort.

ALL ROUND VISIBILITY

The XE155UCR's large windows at the front, side and rear give the operator exceptional panoramic viewing, including a sunroof, for better all round vision while operating.

FILTRATION SYSTEM

The three-stage filtration intake system can cope with severe dusty working conditions with wet or dry filter options, providing clean air in any operating conditions.



Designed to perform...

XE155UCR LARGE EXCAVATOR

EASY HYDRAULIC MAINTENANCE

Hydraulic maintenance includes 2000 hours of hydraulic oil and hydraulic oil suction filter element before replacement and 500 hours of hydraulic oil return filter before replacement.

EXTRA SAFETY FEATURES

The XE155UCR cabin is structurally reinforced also including cab and door locks, alarm horn, rear window emergency exit, emergency escape hammer and the operators seat is equipped with safety belts.

FUEL ECONOMY

Electronic controlled fuel consumption and auto-idle function reduces engine speed when controls are inactive or when the safety lever is switched off - plus fan speed is controlled resulting in lower noise and better fuel efficiency.

DYNAMIC POWER MANAGEMENT

Activating the power boost control system increases digging and lifting force by 8.8%, auto-idling starts after 4 seconds when all controls are returned to neutral position decreasing overall fuel consumption.

RIGID BOX TURNTABLE

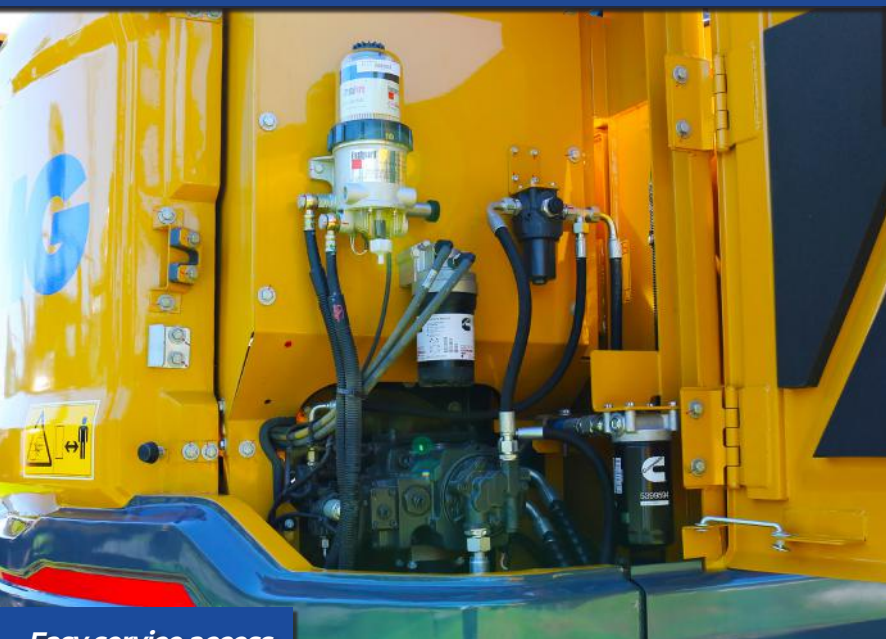
The turntable adopts a rigid box structure to provide higher strength and improve the cab shock absorption ability. The engine mounting base structure is also strengthened to improve shock absorption.

SMART TECHNOLOGY

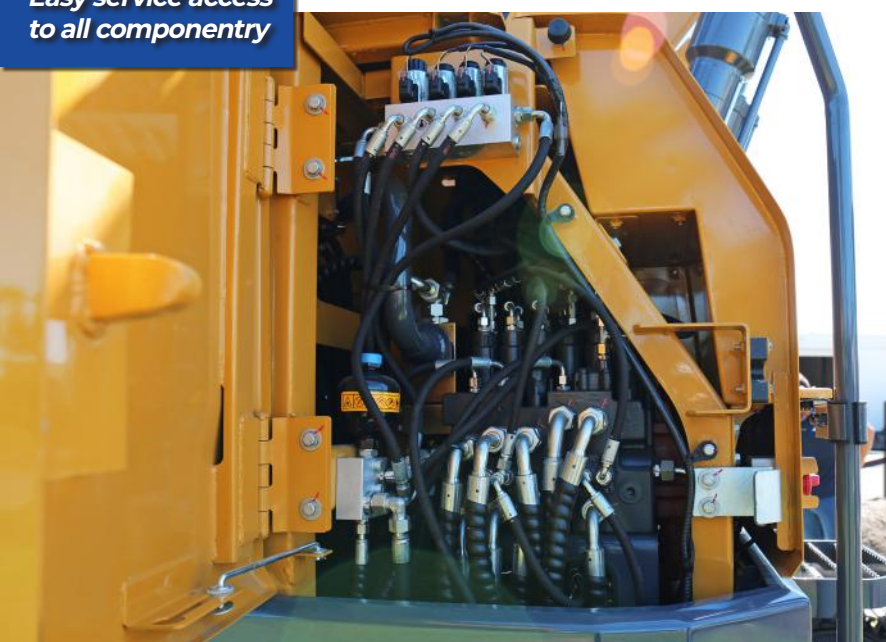
The user friendly new control system can achieve faster data management, plus more efficient control with the integrated control panel. In addition, the large display screen provides multiple information at once, including rear camera display.



...built to last.



Easy service access to all componentry



Easily reached external controls

Air suspension seat and user friendly joystick controls



8 inch screen display with detailed page layout



XE155UCR LARGE EXCAVATOR

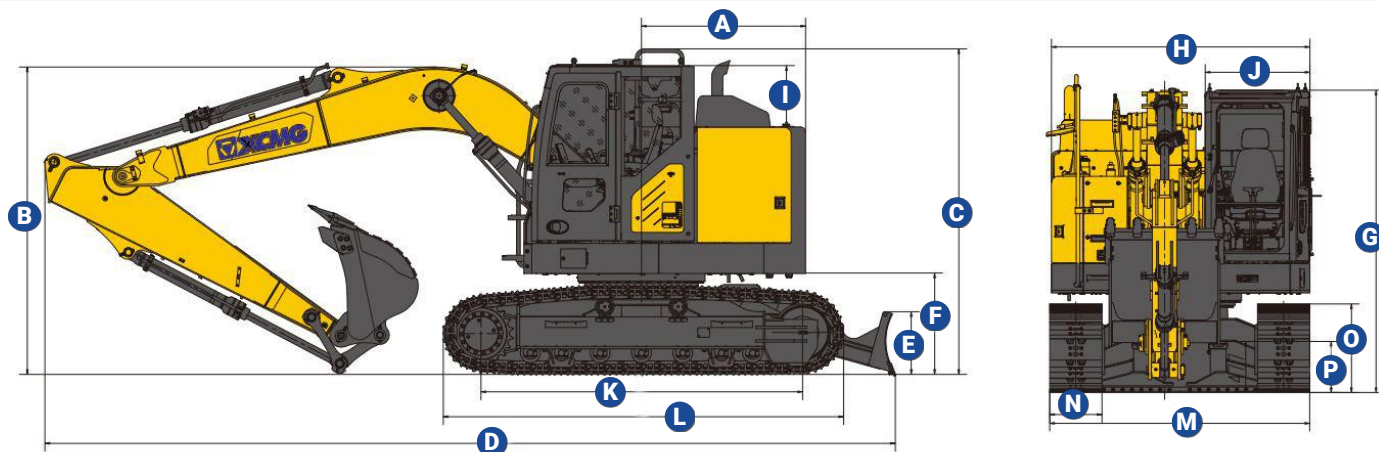


XE155UCR LIFTING CAPACITY

Unit: 1000 kg	A	Chassis Frame	1.5 m		3 m		4.5		6 m		Max. Reach		
	B	Attachment	Front	Side	Front	Side	Front	Side	Front	Side	Front	Side	A
One-Piece Boom 4.6 m Arm 2.52 m Shoe 500 mm Counter- weight: 2.8 t	7.5m	Dozer Up			*3.56	*3.56					*2.66	*2.66	3.58
		W/O Dozer			*3.56	*3.56					*2.66	*2.66	3.52
	6m	Dozer Up					*3.27	*3.27			*2.14	*2.14	5.36
		W/O Dozer					*3.27	*3.27			*2.14	*2.14	5.44
	4.5m	Dozer Up			*3.78	*3.78	*4.32	*3.7	*3.18	2.36	*2.02	*2.02	6.46
		W/O Dozer			*3.78	*3.78	*4.32	*3.7	*3.18	2.36	*2.02	*2.02	6.38
	3m	Dozer Up			*7.36	*7.36	*5.37	3.82	4.14	2.52	*2.01	*2.01	6.92
		W/O Dozer			*7.36	*6.96	*5.37	3.82	3.68	2.25	*2.01	1.82	6.88
	1.5m	Dozer Up			*8.26	*6.38	*6.36	3.57	4.14	2.38	*2.08	*1.91	7.13
		W/O Dozer			*8.26	*6.14	5.67	3.41	3.56	2.24	*2.08	*1.78	7.13
	0m	Dozer Up			*7.22	*6.44	6.08	3.42	4.12	2.34	*2.34	1.84	6.86
		W/O Dozer			*7.22	*5.88	5.42	3.18	3.56	2.2	*2.34	1.71	6.86
	-1.5m	Dozer Up	*5.24	*5.24	*10.55	*6.32	6.18	3.46	4.06	2.28	*2.85	2.12	6.4
		W/O Dozer	*5.24	*5.24	*10.55	*5.92	5.2	3.28	3.52	2.08	*2.85	2.02	6.4
	-3m	Dozer Up	*9.04	*9.04	*8.46	*6.33	*6.12	3.44			*4.08	2.72	5.28
		W/O Dozer	*9.04	*9.04	*8.46	*6.14	5.56	3.26			*4.08	2.52	5.28

*The maximum lifting capacity is limited by the hydraulic capacity of the machine.

XE155UCR SPECIFICATIONS



XE155UCR	A	B	C	D	E	F	G	H	I	J	K	L	M	N	O	P
mm	1530	2860	3030	7924	2490	944	2885	2476	1947	994	3839	3733	2490	500	836	476

KEY PERFORMANCE SPECIFICATIONS

Key Specs	Operating Weight:	16850 kg
	Engine Model:	Cummins QSF 3.8 or B4.5
	Maximum Torque:	500/1500 N.m
	Maximum Power:	91 kW @ 2200 rpm
	Fuel Tank Capacity:	200 L
	Piston Displacement:	273 in³ (4.5L)
	Maximum Travel Speed:	2.9/4.7 kmph
	Grade Ability:	35 °/70%
	Ground Pressure:	0.424 - 0.307 cm²
	Arm / Boom Length:	2520mm/4600mm
	Safety Valves:	Yes, Included as Standard
	Bucket / Arm Digging Forces:	107/73.4 kN
	Minimum Swing Radius:	6185 mm
	Maximum Dig Height / Depth:	8650/5535 mm
	Maximum Swing Speed:	11.3 rpm
	Maximum Swing Torque:	34 kN.m
	Maximum Traction:	13.4 ton
	Maximum Dump Height:	7180 mm
Operator Station	Canopy / Cabin Type:	Enclosed Cabin
	Canopy / Cabin Safety:	ROPS & FOPS
	Seat:	Air Suspension
	Display Screen:	Yes, Included as Standard
Hydraulics	Pump Make:	Kawasaki
	Hydraulic Pump Type:	Two Variable Displacement Tandem Axial Piston Pumps
	Hydraulic System Flow:	2x113.4 LPM
	Cylinders on Boom:	Yes, 2 Included as Standard
	Pilot Pump Type:	Gear Pump
Additional Features	Track Shoe Width:	500 mm
	Emergency Stop:	Yes, Included as Standard
	Front Work Lights:	Yes, Included as Standard
	Rear View Mirrors:	Yes, Included as Standard
	Overheat Alarm:	Yes, Included as Standard
	Bucket/s Included:	Standard Capacity 0.7 m³

Note: specifications listed above are correct at March 2022 and are subject to change any time. For additional information visit www.xcmgmachinery.com.au.